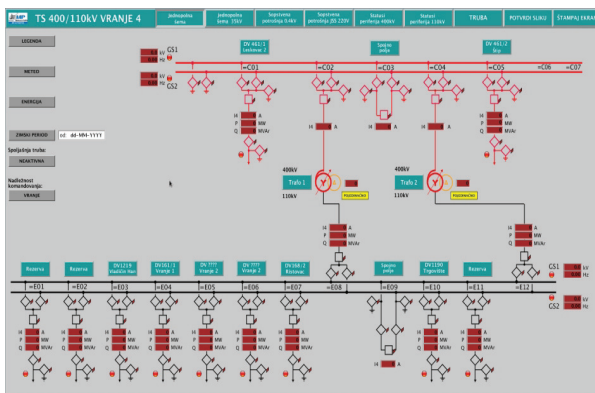


VIEW4

SCADA system

VIEW4 system represents modern integrated SCADA (Supervisory Control And Data Acquisition) solution for complex and distributed control systems, such as utility companies and other remotely controlled distributed systems.

Thanks to its modular design VIEW4 can be easily tailored to meet any specific user demands.



VIEW4com

View4 supports various communication media, topologies and redundancy solutions in order to provide reliable continuous data acquisition from remote units.

Among many of supported communication protocols, the ones that are mostly in use are:

- IEC 60870-5-101 (Master/Slave)
- IEC 60870-5-103 (Master)
- MODBUS RTU (Master)
- MODBUS TCP (Master)
- IEC 61850 (Client)
- DNP 3 (Master)
- IEC 60870-5-104 (Client/Server)
- IEC 60870-6 TASE2/ICCP

Every acquired data can be accessed as an easily identifiable data point using doubled naming conventions.

VIEW4core

Apart from acquisition of data through communication, VIEW4 provides other means for integration of data into the SCADA system. Existence of open APIs enables users to integrate any special data processing into the VIEW4 core.

Regardless of the source, all the data in VIEW4 are processed in the same manner, i.e. alarm and event generating, archiving, data point quality, etc.

VIEW4arch

VIEW4 system enables various types of value archiving, such as periodical archiving with a defined time period, archiving on any data change or on a defined threshold, alarms and events archiving, as well as sequence of events and snapshots.

Archived data presentation is enabled via VIEW4IPS report subsystem.

VIEW4HMI

VIEW4HMI, the main user interface to the VIEW4 system, is based on Java technology and provides real time data presentation on dynamic pictures with vector graphics, on user defined graphs or alarm lists. Execution of complex control functions is made easy using specialized dialogs directly from dynamic pictures.

PowerWeb

PowerWeb module enables Web access to VIEW4 data, where special attention to providing security is required.

VIEW4SMG

Supervision of all SCADA software and hardware components is provided by VIEW4SMG module, whose main task is continuous checking of all the components of the system and alarming in case any problem is detected.



www.pupin.rs